

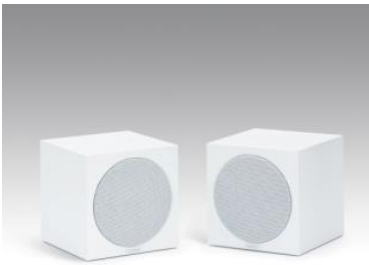
Revox speakers True studio sound quality

Revox Piccolo S60

At only 140 mm each side, the size of the Piccolo S60 is no measure of its fantastic sound. The powerful bass reflex system provides strong bass response.

Use the optional ball-joint wall fixture to mount the Piccolo S60 simply and elegantly to your wall and adjust it as needed.

The strong sounding speaker cube is available in a white structured lacquer and deep black, matte lacquer finish.



Revox Piccolo S60 white



Wall bracket Piccolo S60



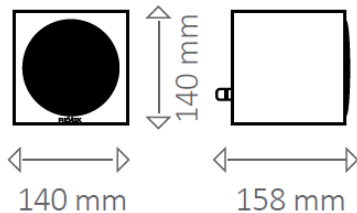
Wall bracket Piccolo S60



Revox Piccolo S60 black

Technical data:

Revox Piccolo S60



2 way, bass reflex

W 140 mm x D 158 mm (incl. connectors) x H 140 mm

Weight 2,1 kg

Lacquered cabinet

Power rating 60 Watt

Music power handling capacity 100 Watt

Impedance 4 Ohm

Frequency response 65 Hz – 20 kHz

Efficiency (2.83 V/1 m) 89 dB

Woofer 1 x 116 mm, aluminium

Tweeter 1 x 14 mm, syncaxial